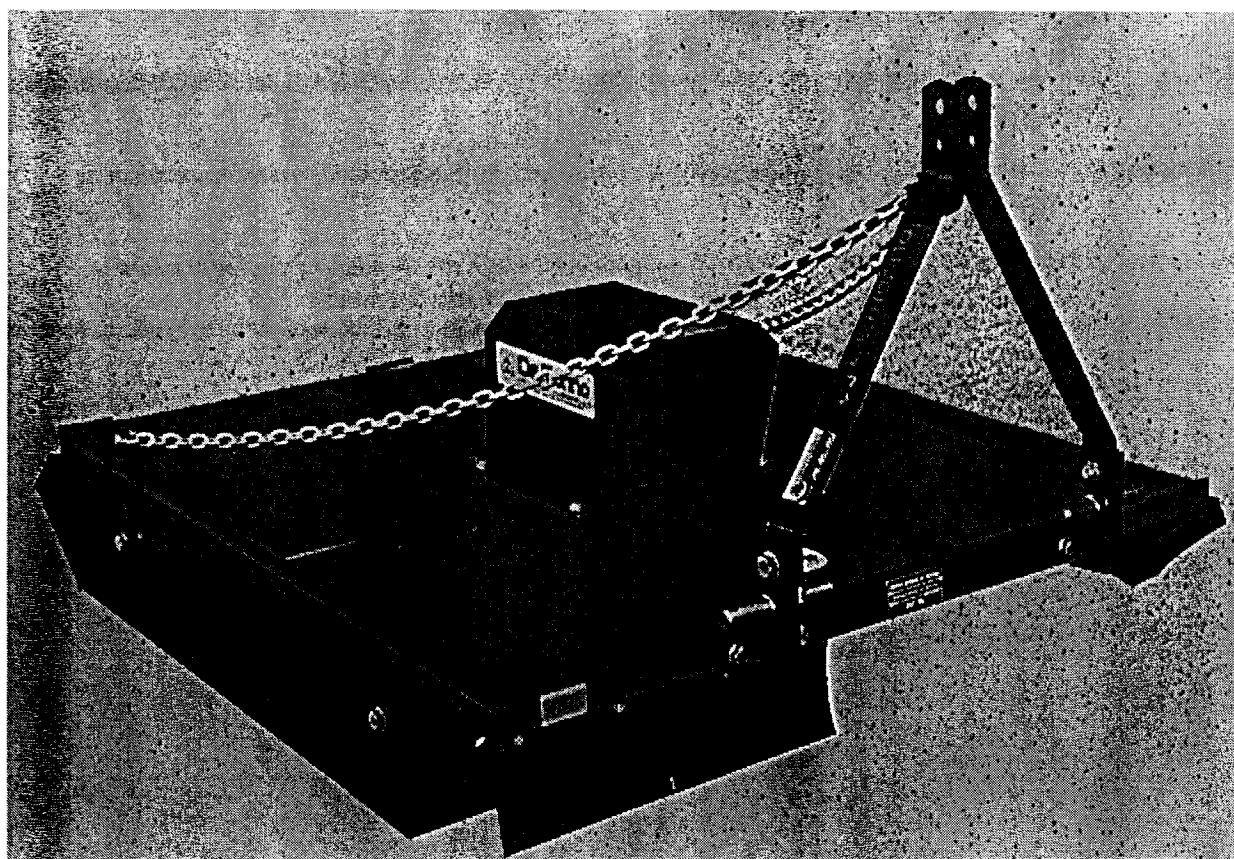




Del Morino srl , v.Caroni di Sotto 19,
I-52033 Caprese Michelangelo AR Italy
Ph: +39-575-791059 Fax: +39-575-791210
E.mail: 100710.3101@compuserve.com
<http://www.Italia.com/Delmorino>
New E.Mail: delmorin@vinf.ats.it

USE AND MAINTENANCE MANUAL

ROTARY SLASHER TYPE "DMK"





Farm & garden equipment manufacturer

DelMorino

Del Morino srl , v.Caroni di Sotto 19,
I-52033 Caprese Michelangelo AR Italy
Ph: +39-575-791059 Fax: +39-575-791210
E.mail: 100710.3101@compuserve.com
http://www.Italia.com/Delmorino
New E.Mail: delmorin@vinf.ats.it

ROTARY SLASHER TYPE DMK – SPARE PARTS LIST

POS.	DESCRIPTION	COD.	90	100	110	120	135	150/2	150/3	180
1	DECK	DMK052AVD	1							
1	DECK	DMK052BVD		1						
1	DECK	DMK052CVD			1					
1	DECK	DMK052DVD				1				
1	DECK	DMK052EVD					1			
1	DECK	DMK051AVD						1	1	
1	DECK	DMK051BVD								1
2	SLIDE	DMK055AVD	2							
2	SLIDE	DMK055BVD		2						
2	SLIDE	DMK055CVD			2					
2	SLIDE	DMK055DVD				2				
2	SLIDE	DMK055EVD					2			
2	SLIDE	DMK055FVD						2	2	
2	SLIDE	DMK055GVD								2
3	HITCH	DMK054AVD	1	1	1					
3	HITCH	DMK054BVD				1	1			
3	HITCH	DMK054CVD						1	1	1
4	III°POINT BRACKET	DMK053AVD	1	1	1	1	1			
4	III°POINT BRACKET	DMK053BVD						1	1	1
5	PROTECTION	DMK169VD	1	1	1	1	1	1	1	1
6	REAR HINGE	DMK056AVD	1							
6	REAR HINGE	DMK056BVD		1						
6	REAR HINGE	DMK056CVD			1					
6	REAR HINGE	DMK056DVD				1				
6	REAR HINGE	DMK056EVD					1			
6	REAR HINGE	DMK056FVD						1	1	
6	REAR HINGE	DMK056GVD								1
7	BLADE HOLDER	DMK058AVD	1							
7	BLADE HOLDER	DMK058BVD		1						
7	BLADE HOLDER	DMK058CVD			1					
7	BLADE HOLDER	DMK059AVD				1				
7	BLADE HOLDER	DMK059BVD					1			
7	BLADE HOLDER	DMK059CVD						1		
7	BLADE HOLDER	DMK060VD								1
8	BLADE BUSH	DMK178D	2	2	2					
8	BLADE BUSH	DMK180D				2	2	2	3	3
9	BLADE	DMK173AD	2	2	2					
9	BLADE	DMK173BD				2	2	2		
9	BLADE	DMK173CD							3	
9	BLADE	DMK173DD								3
10	HINGE PIN	DMK185ZD	2	2	2	2	2	3	3	3
11	CHAIN PIN	DMK061AZD	1							
11	CHAIN PIN	DMK061BVD		1						
11	CHAIN PIN	DMK061CVD			1	1	1	1	1	
11	CHAIN PIN	DMK061DVD								1
12	I° CAT. PIN	SRM220D	2	2	2	2	2			
12	II° CAT. PIN	DMK186D								2
12	II° CAT. DOUBLE PIN	DMK187D						2	2	
13	GEAR BOX 141.002	42000006	1	1	1					

POS.	DESCRIPTION	COD.	90	100	110	120	135	150/2	150/3	180
13	GEAR BOX 135.805	42000007				1	1	1		
13	GEAR BOX 116.806	42000009							1	
13	GEAR BOX 116.805	42000008								1
14	SAFETY CHAIN	40900003	8	9	10	10	10	10	10	13
15	RUBBER SPACER	DMK191D	7	8	10	10	10	10	10	13
16	III° POINT CHAIN	40900004	1							
16	III° POINT CHAIN	40900005		1						
16	III° POINT CHAIN	40900006			1					
16	III° POINT CHAIN	40900007				1				
16	III° POINT CHAIN	40900008					1			
16	III° POINT CHAIN	40900009						1	1	
16	III° POINT CHAIN	40900010								1
17	Split Pin ϕ 2.5x20 UNI 1337	42700001	3	3	3	3	3	4	4	4
18	BLADE WASHER	DMK179D	2	2	2					
19	WASHER ϕ 24 UNI 6592	40300015	1	1	1	1	1	1		
19	WASHER ϕ 30 UNI 6592	40300016							1	1
20	NUT M24 UNI 5593	40200034				1	1	1		
20	NUT M24 UNI 5594	40200021	1	1	1					
20	NUT M30 UNI 5594	40200022							1	1
21	Split Pin ϕ 4.5x50 UNI 1337	42700002	1	1	1	1	1	1		
21	Split Pin ϕ 6x60 UNI 1337	42700003							1	1
22	WASHER ϕ 10 LARGE	40300013	4	4	4	4	4	4	4	4
23	WASHER ϕ 16 LARGE	40300017	4	4	4	4	4	4	4	4
24	WASHER ϕ 16 UNI 6592	40300006	7	7	7	7	7	4		
25	WASHER ϕ 16 UNI 1751	40300018	7	7	7	7	7	4		
26	WASHER ϕ 20 UNI 6592	40300007	2	2	2	2	2	2	6	6
27	WASHER ϕ 24 UNI 1751	40300019	2	2	2	2	2	2	2	2
28	SCREW M10x20 UNI 5739	40100030	4	4	4	4	4	4	4	4
29	SCREW M16x40 UNI 5739	40100034	8	8	8	4	4	4		
30	SCREW M16x45 UNI 5739	40100035	3	3	3	4	4	4	4	4
31	SCREW M20x55 UNI 5739	40100036	2	2		2	2	2	2	2
32	SCREW M20x55 UNI 5933	40100037			2					
33	SCREW M20x60 UNI 5737	40100038	2	2	2	2	2	2	2	2
34	NUT M16 UNI 5588	40200016	7	7	7	7	7	4		
35	NUT M20 DIN 982	40200017	2	2	2	2	2	2	2	2
36	NUT M20 DIN 985	40200018	2	2	2	2	2	2	2	2
37	NUT M24 UNI 5588	40200019	2	2	2	2	2	2	2	2
38	SCREW CLIP 3/8"	40200023	2	2	2	2	2	2	2	2
39	SCREW M16x50 UNI 5737	40100039				3	3			
40	SCREW M18x50 UNI 5739	40100040						3	3	3
41	WASHER ϕ 18 UNI 6592	40300020						3	3	3
42	WASHER ϕ 18 UNI 1751	40300021						3	3	3
43	NUT M18 UNI 5588	40200020						3	3	3
44	SCREW M20x50 UNI 5739	40100041							4	4
45										
46	WASHER ϕ 20 UNI 1751	40300023							4	4
47	NUT M20 UNI 5588	40200024							4	4
48	Bolt Cardan shaft SIZE 2 LENGHT 900	42600003	1	1						
48	Bolt Cardan shaft SIZE 2 LENGHT 1100	42600004			1	1				
48	Bolt Cardan shaft SIZE 4 LENGHT 1200	42600005					1			
48	Slip clutch Cardan shaft SIZE 4 LENGHT 1200	42600006						1	1	

POS.	DESCRIPTION	COD.	90	100	110	120	135	150/2	150/3	180
48	Slip Clutch Cardan shaft SIZE 5 LENGHT 1200	42600007								1



Farm & garden equipment manufacturer

DelMorino

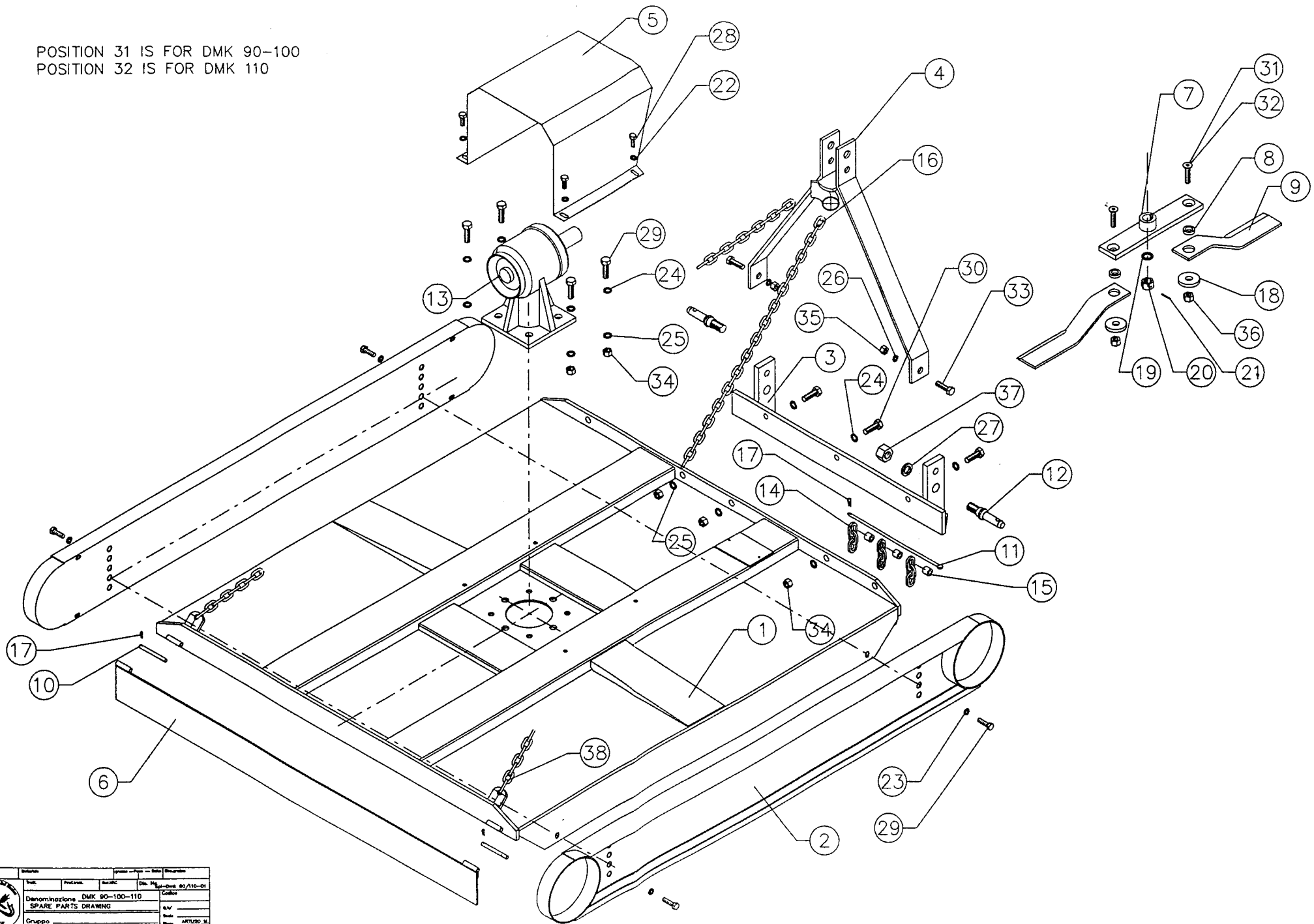
Del Morino srl , v.Caroni di Sotto 19,
I-52033 Caprese Michelangelo AR Italy
Ph: +39-575-791059 Fax: +39-575-791210
E.mail: 100710.3101@compuserve.com
<http://www.Italia.com/Delmorino>
New E.Mail: delmorin@vinf.ats.it

REF.	DESCRIPTION	MODEL	NEW CODE	OLD CODE	PRICES USD
1	DECK	90	DMK052AVD		
1	DECK	100	DMK052BVD	50235	
1	DECK	110	DMK052CVD		
1	DECK	120	DMK052DVD	50236	
1	DECK	135	DMK052EVD		
1	DECK	150/2-150/3	DMK051AVD	50237- 50238	
1	DECK	180	DMK051BVD	50239	
2	SLIDE	90	DMK055AVD		
2	SLIDE	100	DMK055BVD	50249	
2	SLIDE	110	DMK055CVD		
2	SLIDE	120	DMK055DVD	50250	
2	SLIDE	135	DMK055EVD		
2	SLIDE	150/2-150/3	DMK055FVD	50251	
2	SLIDE	180	DMK055GVD	50252	
3	HITCH	90-100-110	DMK054AVD		
3	HITCH	120-135	DMK054BVD	50257	
3	HITCH	150/2-150/3-180	DMK054CVD	50258	
4	III°POINT BRACKET	90-100-110-120-135	DMK053AVD	50253	
4	III°POINT BRACKET	150/2-150/3-180	DMK053BVD	50254	
5	PROTECTION	ALL	DMK169VD	50302	
6	REAR HINGE	90	DMK056AVD		
6	REAR HINGE	100	DMK056BVD	50230	
6	REAR HINGE	110	DMK056CVD		
6	REAR HINGE	120	DMK056DVD	50231	
6	REAR HINGE	135	DMK056EVD		
6	REAR HINGE	150/2	DMK056FVD	50232	
6	REAR HINGE	150/3-180	DMK056GVD	50233	
7	BLADE HOLDER	90	DMK058AVD		
7	BLADE HOLDER	100	DMK058BVD	50281	
7	BLADE HOLDER	110	DMK058CVD		
7	BLADE HOLDER	120	DMK059AVD	50282	
7	BLADE HOLDER	135	DMK059BVD		
7	BLADE HOLDER	150/2	DMK059CVD	50283	
7	BLADE HOLDER	150/3-180	DMK060VD	50284- 50285	
8	BLADE BUSH	90-100-110	DMK178D	50292	
8	BLADE BUSH	120-135-150/2-150/3-180	DMK180D	50293	
9	BLADE	90-100-110	DMK173AD	50287	
9	BLADE	120-135-150/2	DMK173BD	50288	
9	BLADE	150/3	DMK173CD	50289	
9	BLADE	180	DMK173DD	50290	
10	HINGE PIN	ALL	DMK185ZD	50243	
11	CHAIN PIN		DMK061AZD		
11	CHAIN PIN		DMK061BVD		
11	CHAIN PIN		DMK061CVD		
11	CHAIN PIN		DMK061DVD		
12	I° CAT. PIN	90-100-110	SRM220D	50033	
12	II° CAT. PIN	120-135-150/3-180	DMK186D		

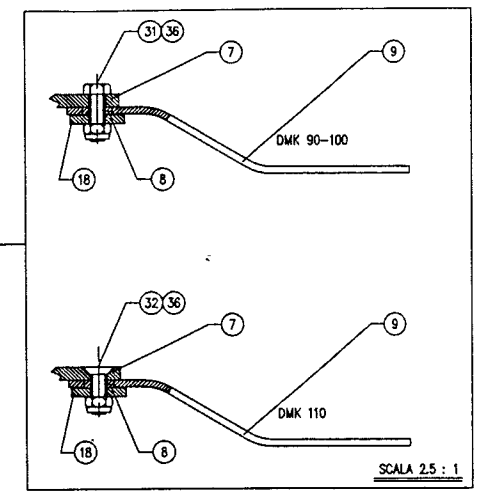
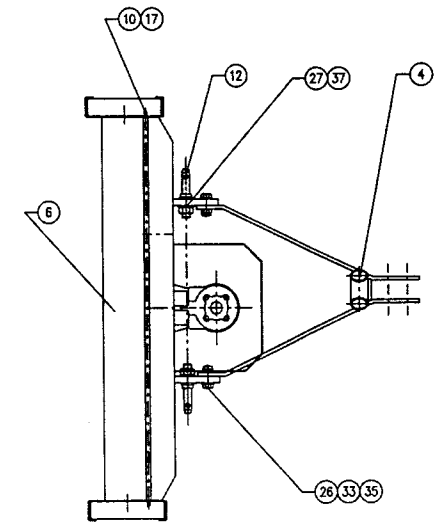
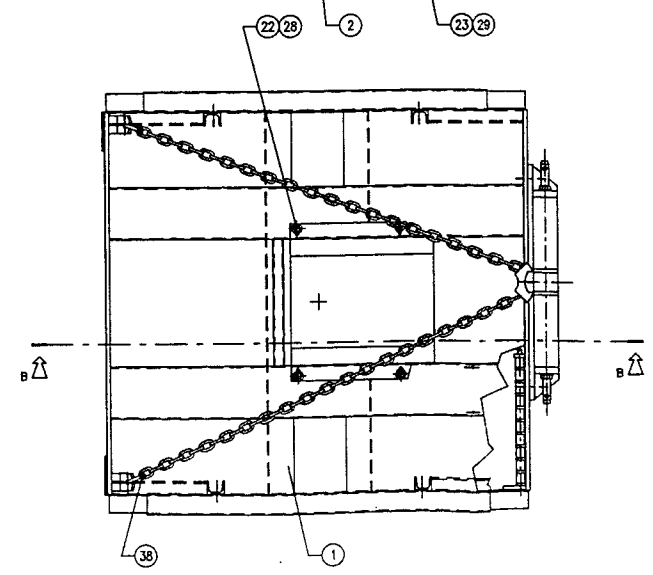
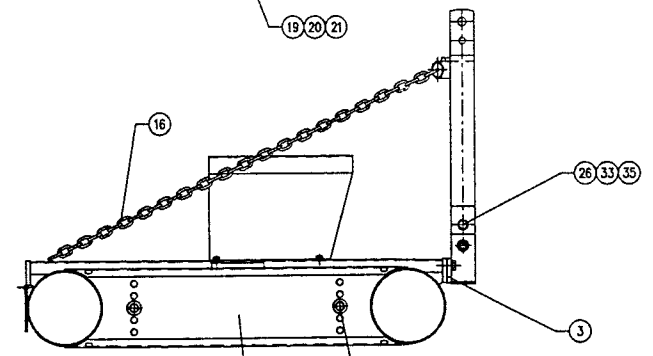
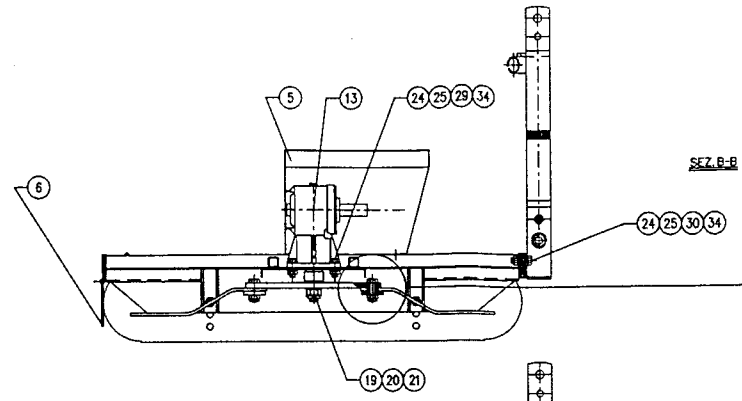
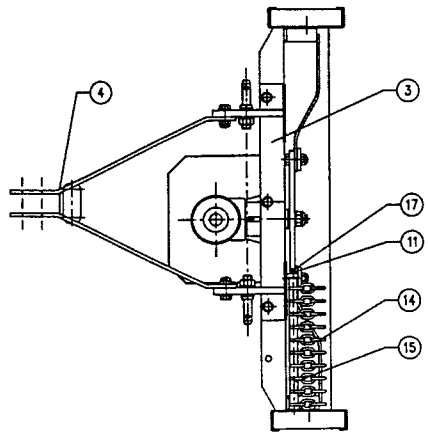
12	II° CAT. DOUBLE PIN	150/2	DMK187D	50260	
13	GEAR BOX 141.002	90-100-110	42000006	50277	
REF.	DESCRIPTION		NEW CODE	OLD CODE	
13	GEAR BOX 135.805	120-135-150/2	42000007	50278	
13	GEAR BOX 116.806	150/3	42000009	50279	
13	GEAR BOX 116.805	180	42000008	50280	
14	SAFETY CHAIN		40900003		
15	RUBBER SPACER		DMK191D		
16	III° POINT CHAIN	90	40900004		
16	III° POINT CHAIN	100	40900005	50244	
16	III° POINT CHAIN	110	40900006		
16	III° POINT CHAIN	120	40900007	50245	
16	III° POINT CHAIN	135	40900008		
16	III° POINT CHAIN	150/2	40900009	50246- 50247	
16	III° POINT CHAIN	150/3	40900010	50248	
17	Split Pin ϕ 2.5x20 UNI 1337		42700001		
18	BLADE WASHER		DMK179D		
19	WASHER ϕ 24 UNI 6592	90-100-110-120 135- 150/2	40300015	50232- 50233	
19	WASHER ϕ 30 UNI 6592	150/3-180	40300016	50234	
20	NUT M24 UNI 5593	90-100-110-120-135- 150/2	40200034	50235	
20	NUT M24 UNI 5594	150/3	40200021	50236	
20	NUT M30 UNI 5594	180	40200022	50237	
21	Split Pin ϕ 4.5x50 UNI 1337	90-100-110-120-135- 150/2	42700002	50294- 50295	
21	Split Pin ϕ 6x60 UNI 1337	150/3-180	42700003	50296	
22	WASHER ϕ 10 LARGE	ALL	40300013	50301	
23	WASHER ϕ 16 LARGE	ALL	40300017	50064- 50272	
24	WASHER ϕ 16 UNI 6592		40300006	50064	
25	WASHER ϕ 16 UNI 1751		40300018	50064	
26	WASHER ϕ 20 UNI 6592		40300007		
27	WASHER ϕ 24 UNI 1751	ALL	40300019	50003	
28	SCREW M10x20 UNI 5739	ALL	40100030	50300	
29	SCREW M16x40 UNI 5739	90-100-110-120-150/2	40100034	50240- 50271	
30	SCREW M16x45 UNI 5739	ALL	40100035	50240	
31	SCREW M20x55 UNI 5739	ALL	40100036	50286	
32	SCREW M20x55 UNI 5933		40100037	50286	
33	SCREW M20x60 UNI 5737	ALL	40100038	50295	
34	NUT M16 UNI 5588	90-100-110-120-150/2	40200016	50024	
35	NUT M20 DIN 982	ALL	40200017	50291	
36	NUT M20 DIN 985	ALL	40200018	50291	
37	NUT M24 UNI 5588	ALL	40200019	50021	
38	SCREW CLIP 3/8"	ALL	40200023		
39	SCREW M16x50 UNI 5737	120-135-150/2	40100039	50240	

40	SCREW M18x50 UNI 5739	150/3-180	40100040	50255	
41	WASHER φ18 UNI 6592	120-135-150/2-150/3-180	40300020	50256	
42	WASHER φ18 UNI 1751	150/2	40300021	50256	
43	NUT M18 UNI 5588	150/2	40200020	50027	
44	SCREW M20x50 UNI 5739	150/3-180	40100041	50241	
45					
46	WASHER φ20 UNI 1751		40300023		
47	NUT M20 UNI 5588	150/3-180	40200024	50242	
48	Bolt Cardan shaft SIZE 2 LENGHT 900		42600003		
48	Bolt Cardan shaft SIZE 2 LENGHT 1100		42600004		
48	Bolt Cardan shaft SIZE 4 LENGHT 1200		42600005		
48	Slip clutch Cardan shaft SIZE 4 LENGHT 1200		42600006		
REF.	DESCRIPTION		NEW CODE	OLD CODE	
48	Slip Clutch Cardan shaft SIZE 5 LENGHT 1200		42600007		

POSITION 31 IS FOR DMK 90-100
 POSITION 32 IS FOR DMK 110



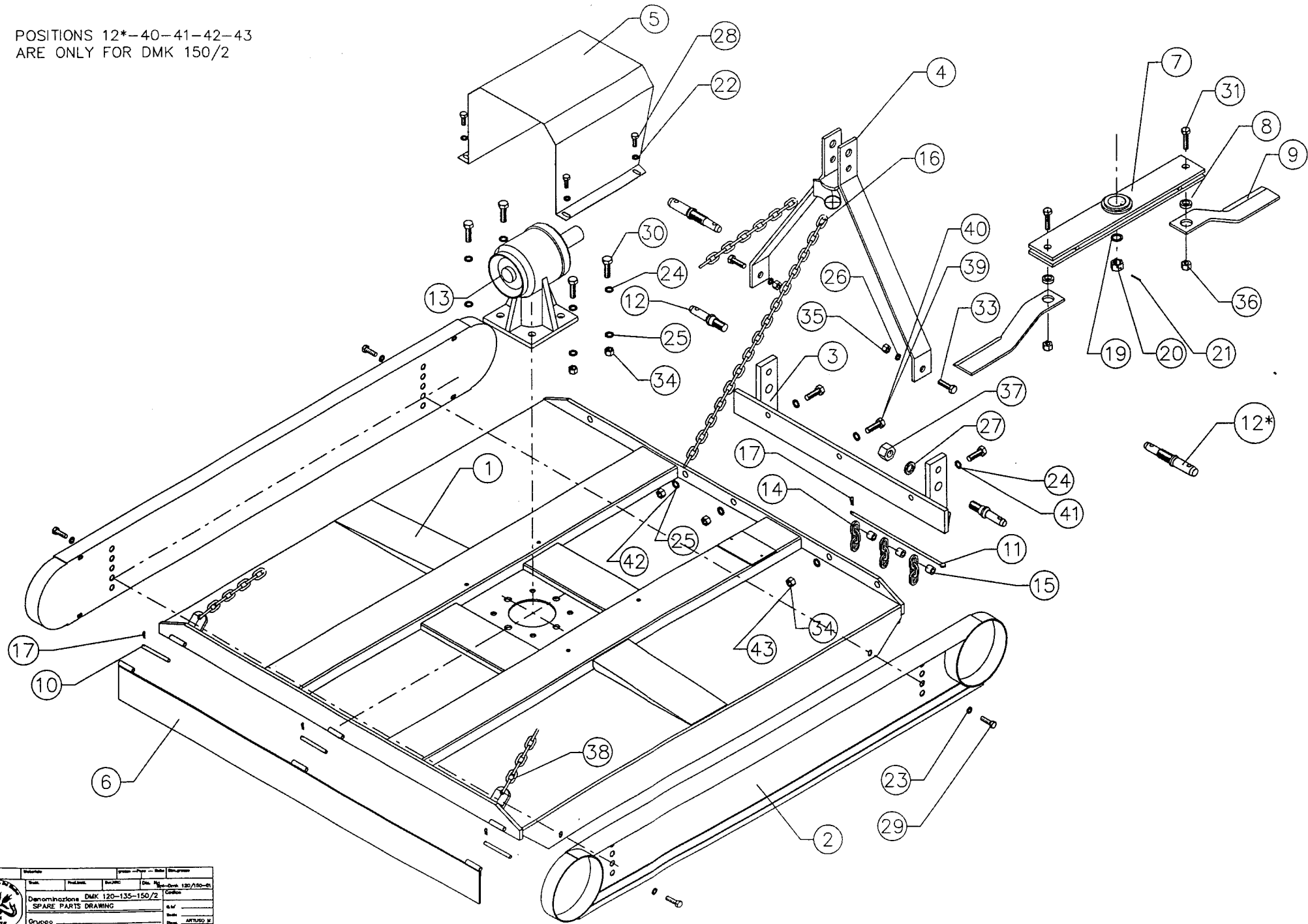
	Modello	Intitolato	Prodotto in Italia - Made in Italy	
	Aut.	Prodotto	Aut. I.C.	Dis. N. 80/110-01
	Denominazione DMK 90-100-110			
	SPARE PARTS DRAWING			
	Gruppo		Aut. I.C.	Dis. N. 80/110-01



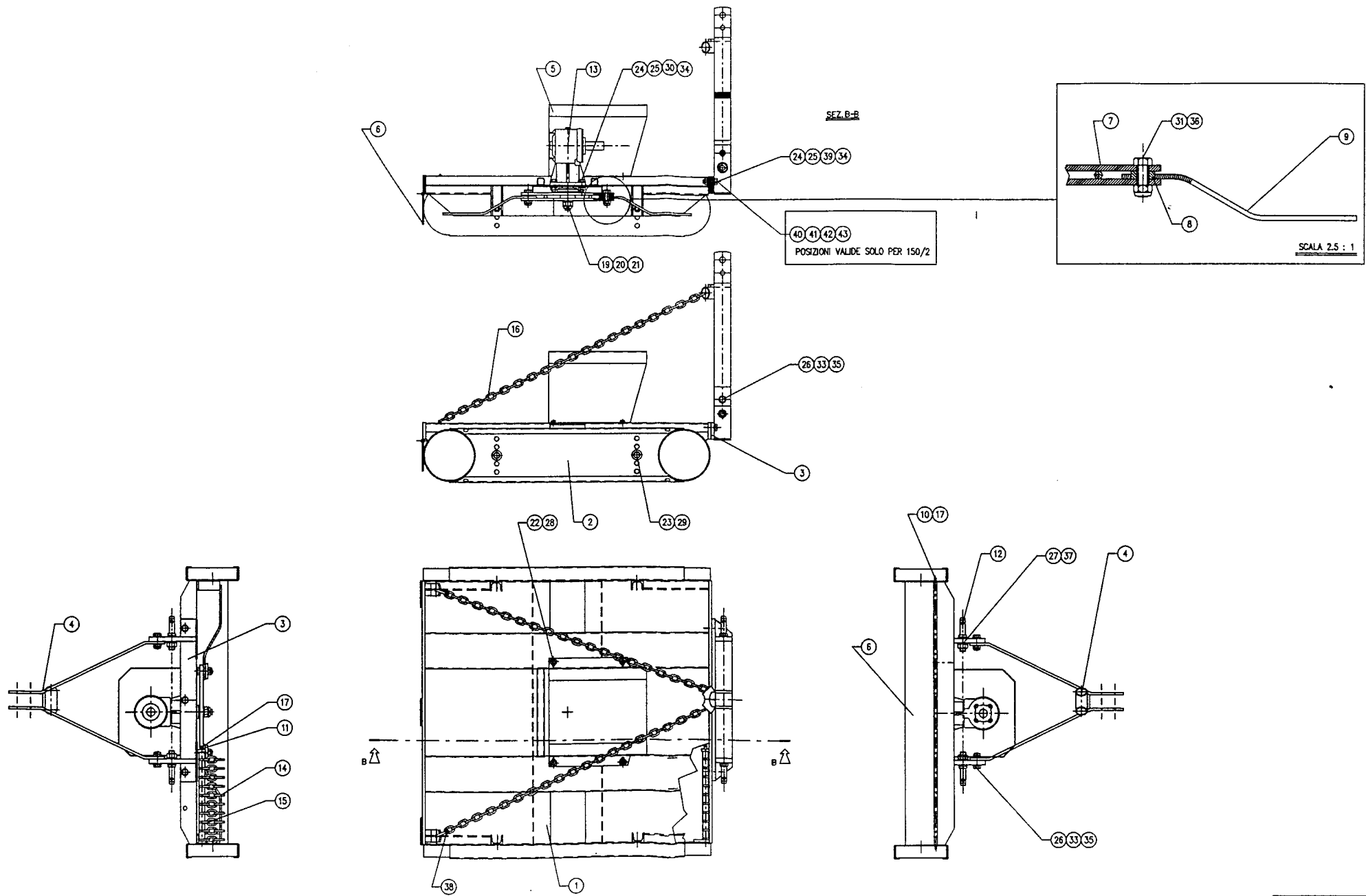
SEI		SEI		SEI	
Denominazione	DMK 90-110	Gruppo	ARTURO M.	Dis.	DMK-001-A1-0
ASSEMBLATO		Partic.		Dis.	08/22/89

D: DMK/GR01/01E/1000A-2
 SEI - SOCIETÀ ELETTROMECCANICA ITALIANA - 10121 TORINO - VIA S. GIUSEPPE 100

POSITIONS 12*-40-41-42-43
ARE ONLY FOR DMK 150/2

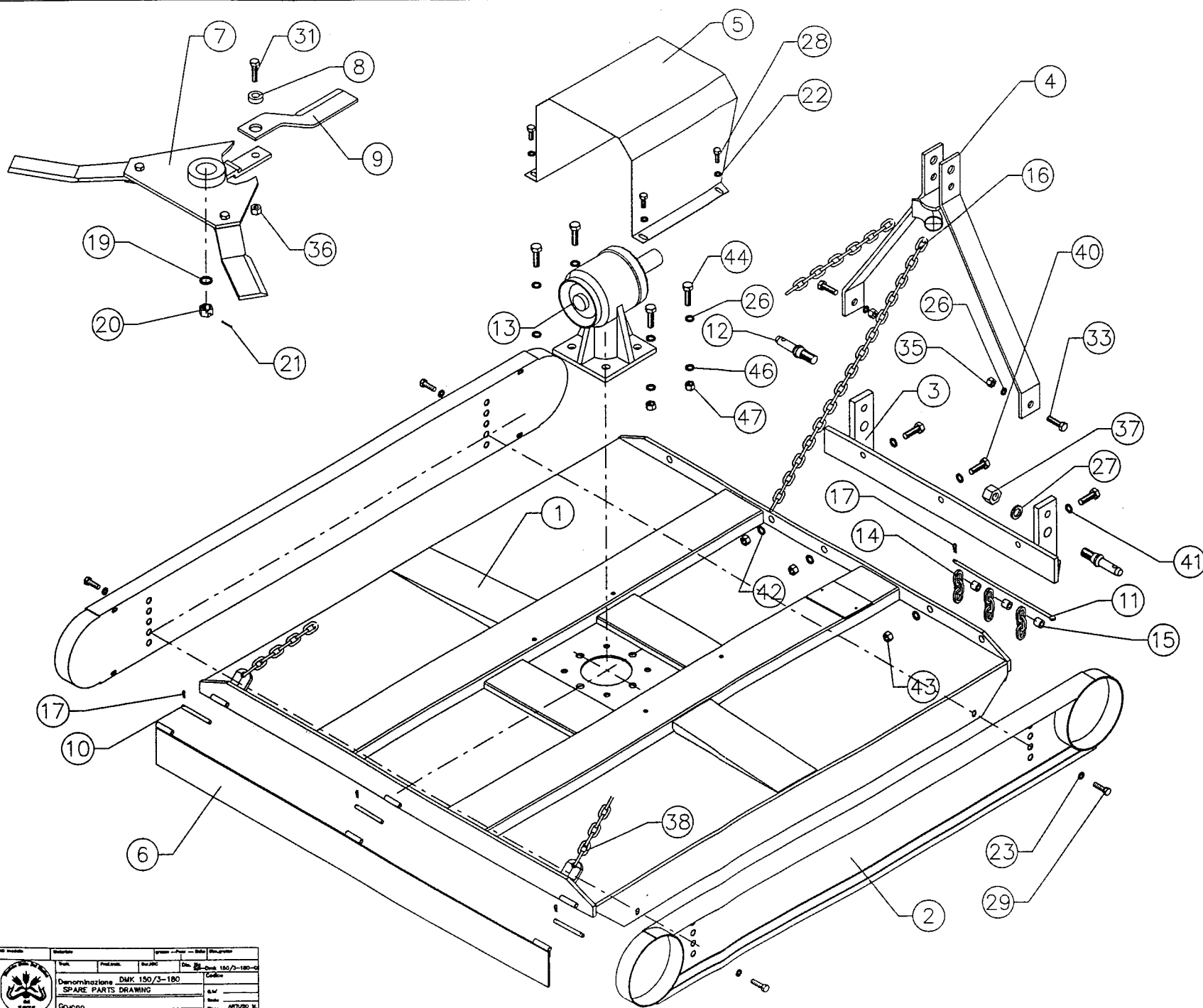


	Mod. 1275 1275	Mod. 1275 1275	Mod. 1275 1275	Mod. 1275 1275
	Denominazione DMK 120-135-150/2 SPARE PARTS DRAWING	Mod. 1275 1275	Mod. 1275 1275	Mod. 1275 1275
Gruppo	Mod. 1275 1275	Mod. 1275 1275	Mod. 1275 1275	Mod. 1275 1275

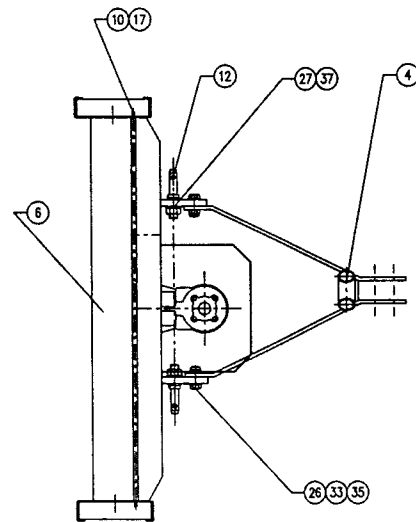
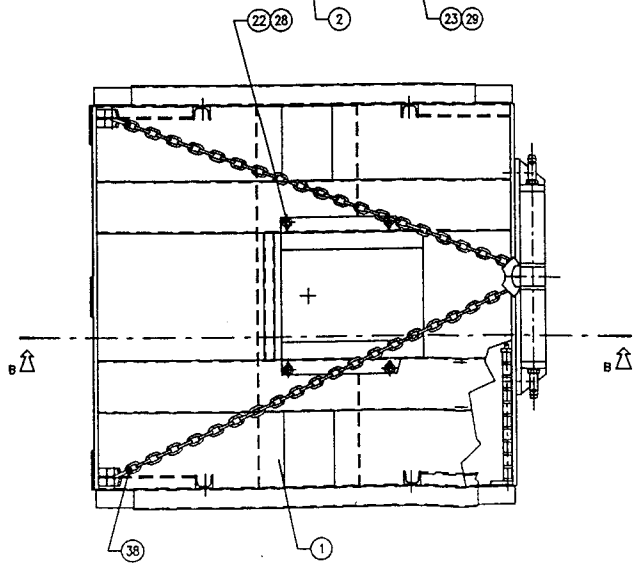
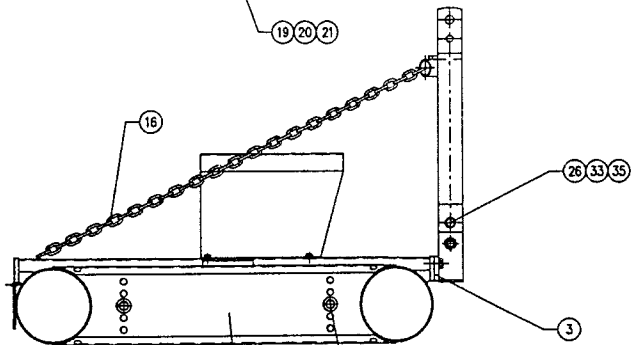
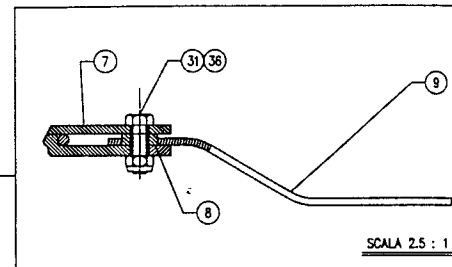
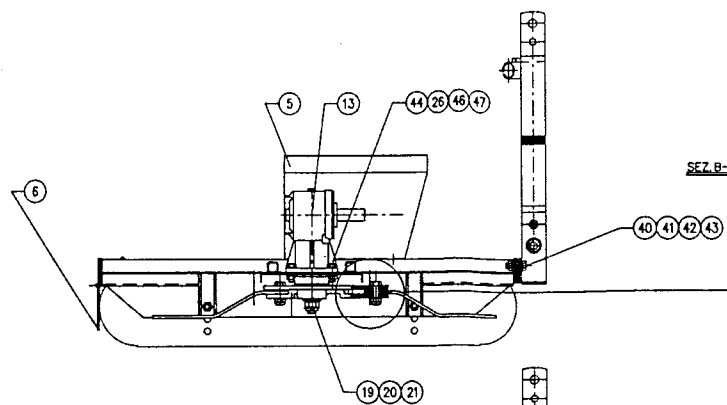
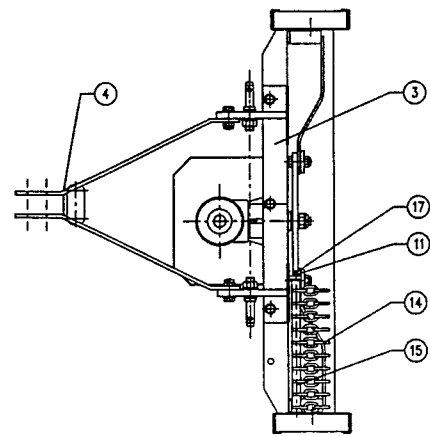


		Denominazione DMK 120-135-150/2 ASSEMBLATO GROTTRINCA		Codice Serie Anno Disegnato Verificato	
Gruppo		INSIEME Dis. N°		Partic.	

D:\MOTOR GROTTRINCA\508A-Z
 1875



NO. mod. _____	Descrizione _____	Gruppo _____	Disegnato _____
Aut. _____	Prodotto _____	Disegnato _____	Disegnato _____
Denominazione DMK 150/3-180			
SPARE PARTS DRAWING			
Gruppo _____	Aut. _____	Disegnato _____	Disegnato _____
17/53/29			



100 Modulo		Inserire		Data		Disegnato	
Aut.	Pro. Aut.	Aut. Aut.	Dis.	DMK-003-A1-D		Cadrone	
Denominazione DMK 150/3-180				Assieme GIROTRINCIA			
Gruppo				a. ut. 17.5			
INSIEME D.M. N°				Partic. 11/02/78			
1875							

D:\DMOR\GIROTRINCIA\508A-2
 © 1978 DMOR S.p.A. - Milano - Italia